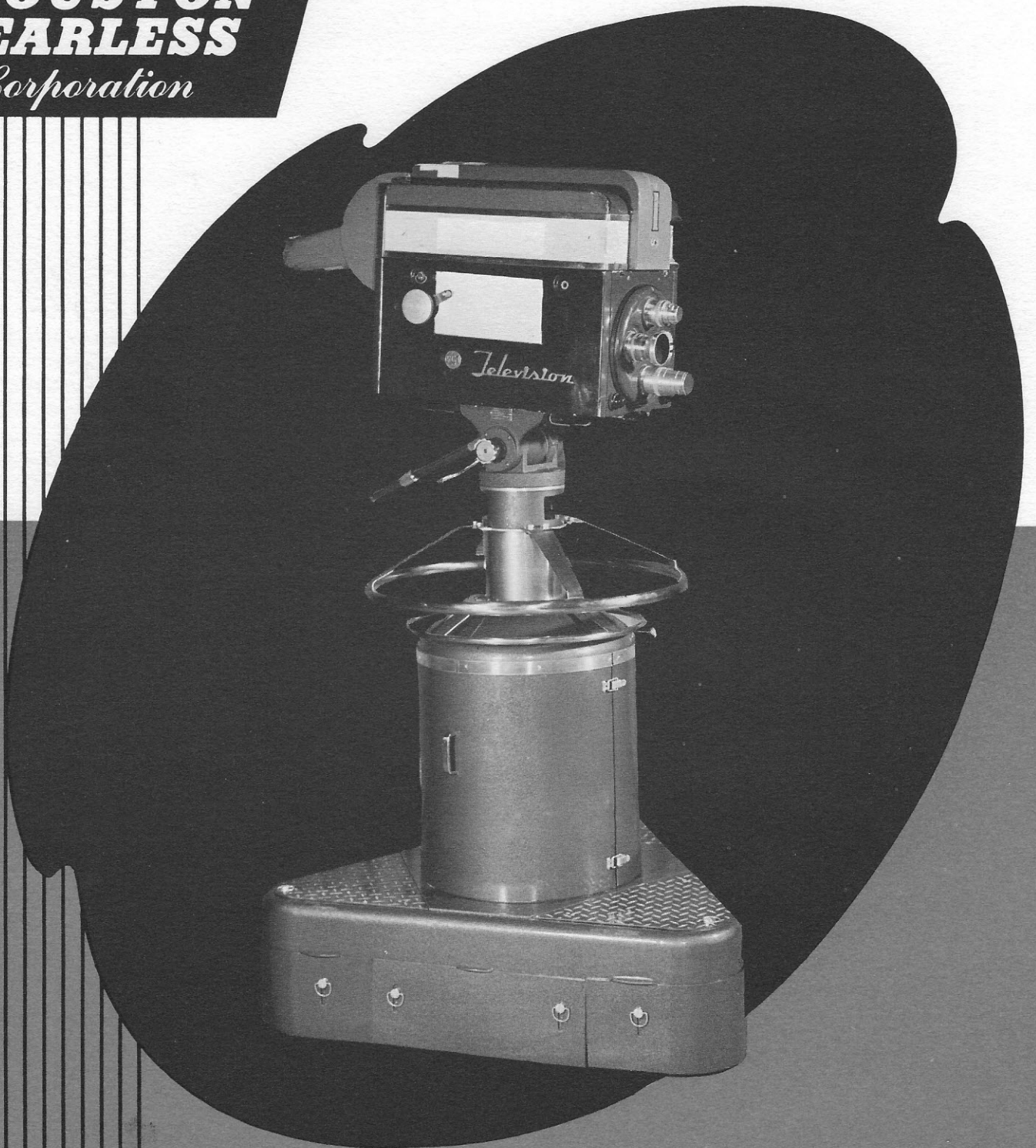


The
**HOUSTON
FEARLESS**
Corporation



TELEVISION PEDESTAL
MODEL PD-3

HOUSTON-FEARLESS

TELEVISION PEDESTAL MODEL PD-3

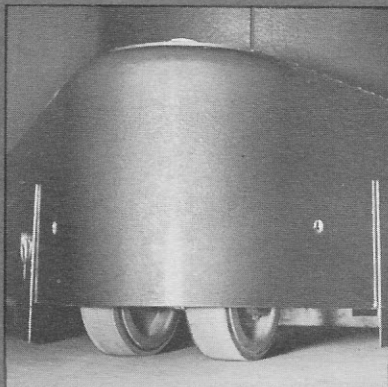
The Houston-Fearless Television Pedestal Model PD-3 gives complete mobility to the camera for normal studio requirements and requires only the cameraman to operate. It makes possible smooth, running dolly shots, raising and lowering of the camera while on the air, and smooth horizontal and vertical panning when used with the Houston-Fearless Friction Head. It provides a firm, stable mount for the camera, resulting in better, steadier pictures.

MANEUVERABILITY

The Pedestal is quickly, easily moved by the cameraman in any direction. A steering wheel, which is directly below the camera at all heights, guides the three sets of dual wheels. Two types of steering are available: 1. Synchronous Steering. All wheels are locked parallel and turn simultaneously. Best for tracking in a straight line. 2. Tricycle Steering. Steer only forward wheel with steering wheel. Back wheels are locked parallel. Enables pedestal to turn sharply in any direction. Change instantly from one type of steering to the other without displacement of camera. Six hard-rubber-tired wheels are mounted in pairs and equipped with ball bearings for smooth, silent, easy rolling. Wheel cable guards can be raised or lowered as desired.

INSTANT HEIGHT ADJUSTMENT

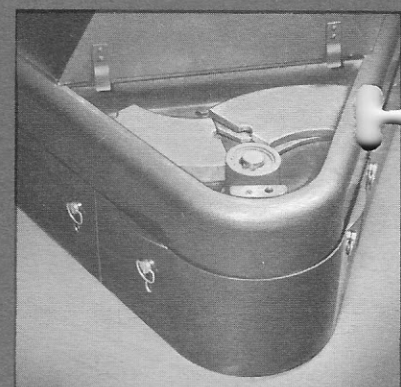
The camera is quickly raised or lowered simply by lifting or pushing on the steering wheel or camera, made possible because the camera is carefully counter-balanced with adjustable weights. No cranking is required. A drag clutch is provided to suit individual requirements. Brake locks column at any height. Raising, lowering, locking, or drag adjustment can be made anywhere in the 360° position of the Pedestal without stooping or bending. This makes it possible to raise or lower camera while Pedestal is in motion. Height range is from 42" to 64" over pan head mount. Additional camera weight such as



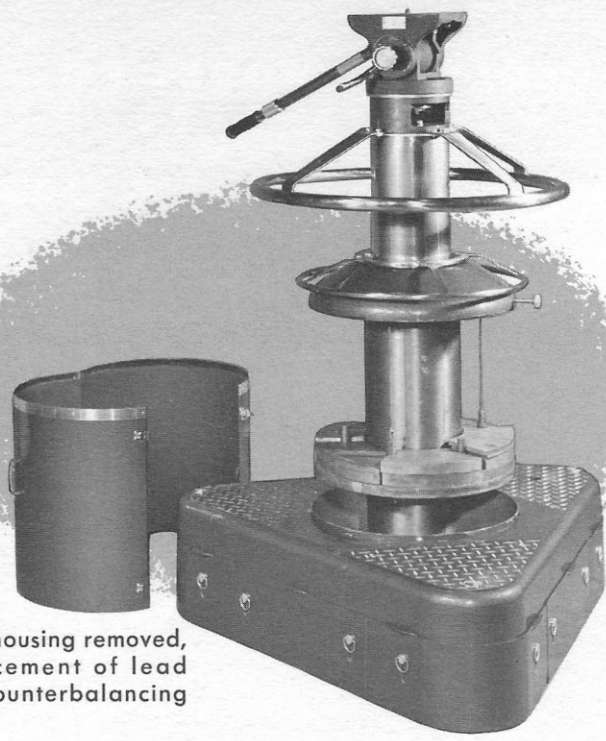
Dual rubber-tired wheels give pedestal more stability on uneven floors. Roll smoothly.



Adjustable guards prevent wheels from running into cables. Corner step plate is shown above.



Storage compartments in base provide convenient space for extra lead weights, tools, etc.



Pedestal with housing removed, showing placement of lead weights for counterbalancing camera.

large lens, lights, etc., is easily compensated for by adding additional weights (furnished) to counterbalance.

BOOM SHOTS

Camera "floats" in balance and can be raised or lowered while dolly is in motion by pressure on the panning handle and camera steering wheel.

MOUNTING HEAD

The Pedestal is designed to accept the Houston-Fearless or other standard friction head. Easily attached or removed. Mounting nut is reached through openings in side of camera mounting column.

REMOVING CAMERA

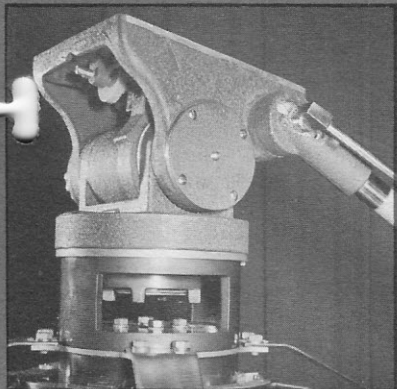
Camera column can be locked down to allow camera removal without removing counter-balance.



Easily operated by one man. Offers maximum convenience and mobility. Shown here in low position.



Counterbalanced camera is easily raised or lowered by light pressure on steering wheel.



Head is easily attached or removed. Mounting nut accessible through opening at top of column.



Arrows on steering wheel show direction of wheels. Lower ring locks column and controls drag.

HOUSTON-FEARLESS TV PEDESTAL MODEL PD-3

STEP PLATES

Non-slip step plates are provided on corners for use of cameraman when camera is in raised position. They are removable to allow tool and weight storage in base.

CONSTRUCTION

The Pedestal is of quality materials and fine craftsmanship throughout. Base is of arc-welded steel. Center column is of seamless steel tubing. Unit is in attractive hammertone finish that doesn't show dust or foot marks. Trim and steering wheel are satin chrome. Designed for easy service and maintenance in the field. As all ball bearings used are packed and sealed at the factory, no lubrication is required.

SPECIFICATIONS

Maximum Height

(Not including friction head) 57"

Minimum Height

(Not including friction head) 36"

Maximum Width 38 $\frac{1}{4}$ "

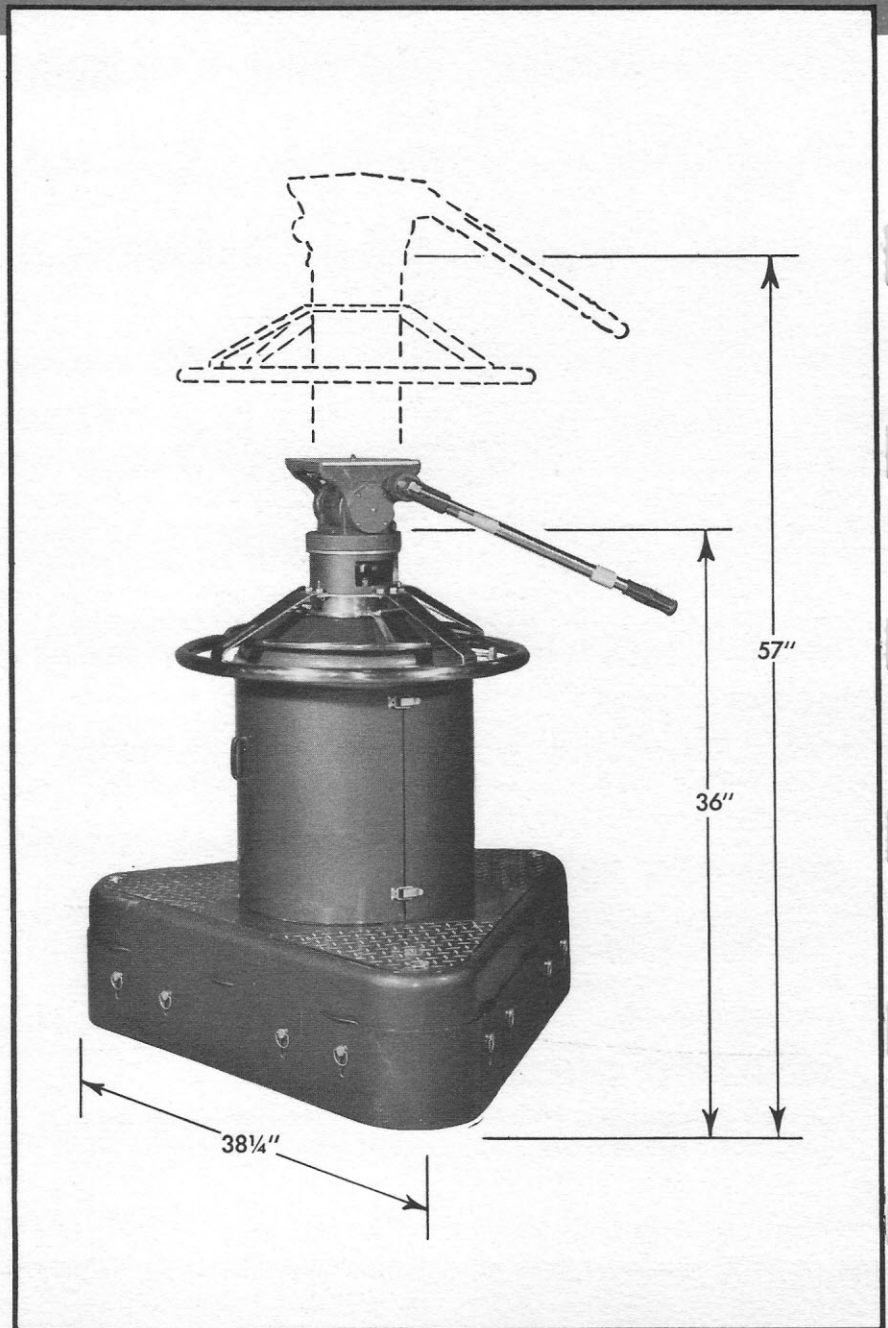
Minimum Width

(Will go through 36" door) 34 $\frac{1}{2}$ "

Weight 596 pounds

Shipping Weight 750 pounds

Friction head not included with pedestal



Write for information on specially-built equipment for your specific needs.

The
**HOUSTON
FEARLESS**
Corporation

LITHOGRAPHED IN U.S.A.

• DEVELOPING MACHINES • COLOR PRINTERS • FRICTION HEADS
• COLOR DEVELOPERS • DOLLIES • TRIPODS • PRINTERS • CRANES

11801 W. OLYMPIC BLVD • LOS ANGELES 64, CALIF.

"SPECIALISTS IN MOTION PICTURE PROCESSING EQUIPMENT"